



# NEW Knitting Accessories



Art No.3140

## POINT PROTECTORS AND STOPPER

For use when using a double pointed needle as a single pointed needle. Small and light for comfortable knitting.



Color-coded with L/R markings, making it easy to tell you which side of the knitted fabric you are working on.

6 pieces

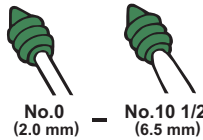


Art No.3141

## POINT PROTECTORS PETIT

Use this cap while resting your hands.

For knitting needles No.0 (2.0 mm) - No.10 1/2 (6.5 mm)



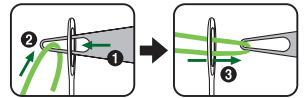
4 pieces



Art No.3142

## CLOVER YARN THREADER

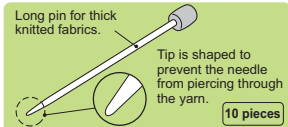
A firm flat threader with a large opening, this product is ideal for hard-to-thread yarns (long fiber yarns etc.).



Art No.3143

## BAMBOO MARKING PINS

• Use this bamboo marking pin to hold sections together when joining seams.  
• The natural texture of the bamboo keeps the pin from sliding out.



10 pieces

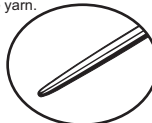


Art No.3144

## DARNING NEEDLE SET

A set of darning needles for woolen yarns ranging from light to superbulky in thickness.

The round tip prevents the needle from piercing through the yarn.



Art No.3145

## TAPESTRY NEEDLE SET

A set of tapestry needles for woolen yarns ranging from light to bulky in thickness.

The tip is bent to make hooking of threads easier.



# Bamboo Knitting Needles "Takumi"®



In Japanese "Takumi"  
means "craftsman"



## Our high quality begins with selection of raw materials.

Clover values the feeling of the knitter as we reach perfection in the technology of making knitting needles. Our knitting needles are filled with the thoughtful care of the knitter.

### Only the finest bamboo can become "Takumi"®.

Our high-quality knitting needles are created with the properties of the finest natural bamboo from Japan and the long-nurtured Clover manufacturing technique. The more you knit with our "Takumi"® needles, the more you'll love knitting.

### Our bamboo producing regions are limited to cold climate minimal snowfall

The bamboo trees from cold climates are hard and highly resistant to bending, making them most suitable for knitting needles. We choose bamboos from regions with the least snowfall to avoid those stems that have been bent or damaged by weight of the snow.

### We only use fully matured and properly aged bamboo stock, with adequate density.

The bamboo trees from cold climates are hard and highly resistant to bending, making them most suitable for "Takumi"® knitting needles. We choose the bamboo from regions with the least snowfall to avoid stems that have been bent or damaged by the weight of the snow.

### We limit the harvest of Bamboo trees to the winter season.

In the winter, Bamboos contain less water, which may cause stains and molds, and their woody fibers are tighter.

### We only use the portions that are suitable for knitting needles.

We never use bent bamboos or portions near nodes and roots, as these contain bent fiber. Furthermore, we use only the bamboo internal stems that are farthest from the nodes and that have adequate density.

### We use the hard portion just under the surface as our source material.

We never use bent bamboos or portions near nodes and roots, as these contain bent fibers. Furthermore, we use only the inter nodal stems that are farthest from the nodes and have adequate density.

### We give them an ultra-smooth finish.

With the proper glide of the yarn, your hands will no feel tired-even after knitting for a long time.

### We finish the needles to a uniform thickness.

They are finished to accurate specifications to ensure even loops and a beautiful knit finish.

### Our easy-knit needle point will not split yarns.

The needle point is rounded by Clover's high technology method.

**CLOVER MFG.CO.,LTD.** JAPAN 3-15-5 Nakamichi, Higashinari-ku Osaka Japan

Europe: e-mail: [infoclover@nifty.com](mailto:infoclover@nifty.com) <http://www.clover-euro.de>  
Asia/Oceania: <http://world.cloverhobby.jp/index/english.html>

D0161

July 2009  
OTT67